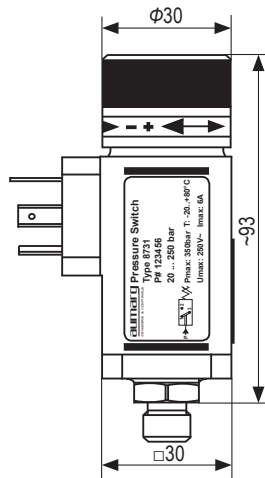




### Piston Pressure Switch 活塞压力开关

- Adjustment range: 10 ... 320 bar
  - Piston with PTFE - sealing
  - Change over contact SPDT, NC, NO
  - E-connection: L-Plug acc. to DIN EN 175301-803A
  - Power rating: 250V AC / 6A、24V DC / 4A
  - 360° turnable fluid connection
- 开关范围 : 10 ... 320 bar
  - PTFE 和 O 型圈密封活塞
  - 开关类型为单刀双掷, 常闭、常开
  - 电气连接 : L-Plug 插头
  - 额定功率 : 250V AC / 6A、24V DC / 4A
  - 过程连接可 360° 旋转

#### Drawing / 尺寸图

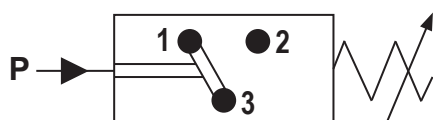


#### Standard types / 标准类型

Series 系列	Adjustment ranges 开关范围	Max. system pressure 最大系统压力	Repeatability 重复性	Hysteresis 滞后	Measurement element 测量元件	Pressure fitting 过程连接	Piston with PTFE+O-ring 活塞密封材质	Material of housing 本体材质
8731	10 ... 30 bar	350 bar	± 0,6 bar	Min.7 bar Max.10% 最小 7bar 最大 10%	Piston 活塞	G1/4" 1/4NPT M10 × 1 R1/4" G1/4" female R1/4" female	NBR NBR-LowTemp. EPDM FVMQ Viton	Zinc plated steel / 镀锌钢 stainless steel / 不锈钢
8731	10 ... 80 bar		± 1,6 bar					
8731	10 ... 120 bar		± 2,4 bar					
8731	10 ... 160 bar		± 3,2 bar					
8731	20 ... 200 bar		± 4,0 bar					
8731	20 ... 250 bar		± 5,0 bar					
8731	30 ... 320 bar		± 6,4 bar					

Technical Specification / 技术规范								
Adjustment range 开关范围	10 ... 30	10 ... 80	10 ... 120	10 ... 160	20 ... 200	20 ... 250	30 ... 320	[ bar ]
Repeatability 重复性	± 0,6	± 1,6	± 2,4	± 3,2	± 4,0	± 5,0	± 6,4	[ bar ]
Max. system pressure 最大系统压力	350							[ bar ]
Max. hysteresis 最大滞后	5 bar + 5 ... 10%, not adjustable 5 bar + 5 ... 10%, 不可调							
Switched voltage 开关电压	AC: ~ 250 / DC: ~ 24							[ V ]
max. switched current resistive load 最大开关电阻负载电流	AC: 6 / DC: 4							[ A ]
Mechanical lifetime 机械寿命	> 5 × 10 <sup>6</sup> / cycles							
Switching frequency 开关频率	max. 100 cycles / min 最高 100 次 / 分钟							
Material of housing 本体材质	zinc plated steel / stainless steel 镀锌钢 / 不锈钢							
Piston with PTFE + O-ring 活塞密封 O 型圈材质	NBR / NBR-LowTemp. / EPDM / FVMQ / Viton							
Pressure fitting 过程连接	G1/4" / 1/4NPT / M10×1 / R1/4" / G1/4" female / R1/4" female							
Tightening torque, recommended 拧紧扭矩, 推荐	20							[ Nm ]
Vibration resistance 抗振动性	10g (10 ... 2000Hz) sinus acc. to ISO 16750-3 10g 符合 ISO 16750-3 在 10 .. 2000 Hz							
Shock resistance 抗冲击性	30g, 14ms shaped sinus acc. to DIN 40046, T7 30g, 14ms 符合 DIN 40046, T7							
Temperature range of medium 介质温度范围	NBR : -20 ... +80 NBR-LowTemp.: -40 ... +80 EPDM: -40 ... +100 FVMQ: -40 ... +100 Viton: 0 ... +100							[ °C ]
Protection degree 防护等级	IP65 using L-Plug / L-Plug 插头为 IP65							
Weight 重量	~ 0,35							[ kg ]

## Wiring diagram / 接线图



SPDT / 单刀双掷

# Series 8731 / 8731 系列

Pressure Switch / 压力开关

## Specification key / 规格代码

8731 -  -  -  -  -  -  -

Pressure adjustment range / 压力设置范围	
46	10 ... 30 bar
48	10 ... 80 bar
49	10 ... 120 bar
84	10 ... 160 bar
50	20 ... 200 bar
85	20 ... 250 bar
52	30 ... 320 bar

Output signal / 输出信号	
3	SPDT / 单刀双掷

Piston with PTFE + O-ring / 活塞密封圈材质		
N	NBR	-20 ... +80°C
L	NBR-LowTemp.	-40 ... +80°C
E	EPDM	-40 ... +100°C
F	FVMQ	-40 ... +100°C
V	Viton	0 ... +100°C

Material of housing / 本体材质	
Z	zinc plated steel / 镀锌钢
S	stainless steel / 不锈钢

Options / 选项	
W	without / 无
XX,XX	Factory preset / 工厂预设开关点 <sup>1)</sup>

<sup>1)</sup> set point adjustment increasing or decreasing.  
<sup>1)</sup> 设置开关点为上升或下降压力。

E-connection / 电气连接	
51	L-Plug EN 175301-803-A / L-Plug 插头

Pressure fitting / 过程连接	
12	G1/4"
32	1/4NPT
51	M10×1
42	R1/4"
62	G1/4" female
66	R1/4" female

### Sample:

**8731-85-3-N-Z-12-51-160,0F**

Pressure Switch  
Type: 8731  
Adjustment range: 20 ... 250 bar  
Output signal: SPDT  
Piston with sealing: PTFE/NBR  
Material of housing: zinc plated steel  
Pressure fitting: G1/4"  
E-connection: L-Plug acc. to DIN EN 175301-803  
Option: Factory preset switch SP=160,0 bar falling

### 举例:

**8731-85-3-N-Z-12-51-160,0F**

压力开关  
型号: 8731  
压力设置范围: 20 ... 250 bar  
输出信号: SPDT  
活塞密封材质: PTFE/NBR  
本体材质: 镀锌钢  
过程连接: G1/4"  
电气连接: L-Plug 插头  
选项: 工厂预设开关, 开关点 =160,0 bar 下降